



StepSaver™ 65V13 Vertical Rotor

Speed up processing and minimize sample loss with the titanium Thermo Scientific™ StepSaver™ 65V13 Vertical Rotor.

Contact Sales

+1 866 984 3766 | [Submit a product question](#)

Contact Support

+1 866 984 3766 | [Submit a support or service question](#)

Catalog #	Description	Capacity
79243	Stepsaver 65V13 Vertical Titanium Rotor	8 x 13.5mL
<div style="background-color: #e0e0e0; padding: 5px;"> - FULL SPECIFICATIONS </div>		
	Capacity	8 x 13.5mL
	Max. RCF	400,671 x g
	Angle	0°
	Speed	65,000rpm
	Diameter (English) Tube	0.63 in.
	Diameter (Metric) Tube	16mm
	K Factor	12.9
	For Use With	Thermo Scientific™ Sorvall™ WX ultracentrifuges
	Type	Vertical
	Material	Titanium
	Length (English) Tube	3.66 in.
	Length (Metric) Tube	93mm
	Net Weight (English)	21.4 lb.
	Net Weight (Metric)	9.7kg
	Radius (English) Avg.	3.02 in.
	Radius (English) Max.	3.34 in.
	Radius (English) Min.	2.7 in.
	Radius (Metric) Avg.	76.7mm
	Radius (Metric) Max.	84.9mm
	Radius (Metric) Min.	68.5mm
	Avg. RCF	361,972 x g
	Description	Stepsaver 65V13 Vertical Titanium Rotor
	Min. RCF	323,274 x g



S100-AT6 Fixed Angle Rotor – DISCONTINUED

This product has been discontinued. Please consider our replacement product: [Thermo Scientific™ S110-AT Fixed Angle Rotor](#).

Contact Sales

+1 866 984 3766 | [Submit a product question](#)

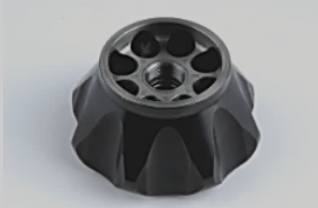
Contact Support

+1 866 984 3766 | [Submit a support or service question](#)

Catalog #	Description
45588	S100-AT6 Fixed-angle rotor; 0.04L
	FULL SPECIFICATIONS
	Capacity 8x 5.1mL
	Max. RCF 603180 x G
	Angle 30°
	Speed 100,000rpm
	Diameter (English) Tube 0.51 in.
	Diameter (Metric) Tube 13mm
	K Factor 17.7
	Type Fixed-Angle
	Material Titanium
	Length (English) Tube 2.5 in.
	Length (Metric) Tube 63mm
	Net Weight (English) 2.5 lb.
	Net Weight (Metric) 1.13kg
	Radius (English) Avg. 1.58 in.
	Radius (English) Max. 2.13 in.
	Radius (English) Min. 1.06 in.
	Radius (Metric) Avg. 40.05mm
	Radius (Metric) Max. 54mm
	Radius (Metric) Min. 26.9mm
	Avg. RCF 452,385 x G
	Description S100-AT6 Fixed-angle rotor; 0.04L
	Item Description S100-AT6 Fixed-angle rotor; 0.04L
	Min. RCF 300,473 x G

S150-AT Fixed Angle Rotor

Perform high-speed applications with the Thermo Scientific™ S150-AT Fixed Angle Rotor, which operates at 150,000rpm with 8 x 2.0mL capacity.



Gallery (2) >

Contact Sales

+1 866 984 3766 | [Submit a product question](#)

Contact Support

+1 866 984 3766 | [Submit a support or service question](#)

Catalog #	Description
45582	S150-AT Fixed Angle Rotor
▣ FULL SPECIFICATIONS	
Capacity	8 x 2.0mL
Max. RCF	899,744 x g
Angle	30°
Speed	150,000rpm
Diameter (English) Tube	0.43 in.
Diameter (Metric) Tube	11mm
K Factor	6.1
For Use With	Thermo Scientific™ Sorvall™ MTX and MX Plus micro-ultracentrifuges
Type	Fixed Angle
Material	Titanium
Length (English) Tube	1.3 in.
Length (Metric) Tube	34mm
Net Weight (English)	1.1 lb.
Net Weight (Metric)	0.49kg
Radius (English) Avg.	1.1 in.
Radius (English) Max.	1.41 in.
Radius (English) Min.	0.82 in.
Radius (Metric) Avg.	28.3mm
Radius (Metric) Max.	35.8mm
Radius (Metric) Min.	20.8mm
Avg. RCF	711,250 x G
Description	S150-AT Fixed Angle Rotor
Item Description	S150-AT Fixed-Angle Rotor
Min. RCF	522,756 x G